

HKSUM CME program

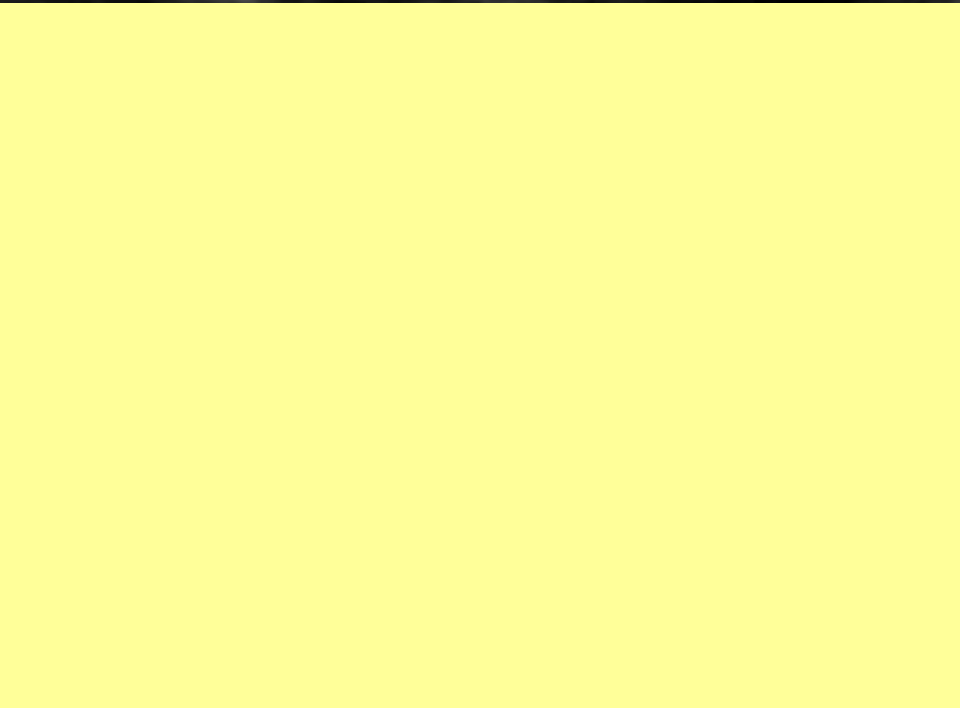
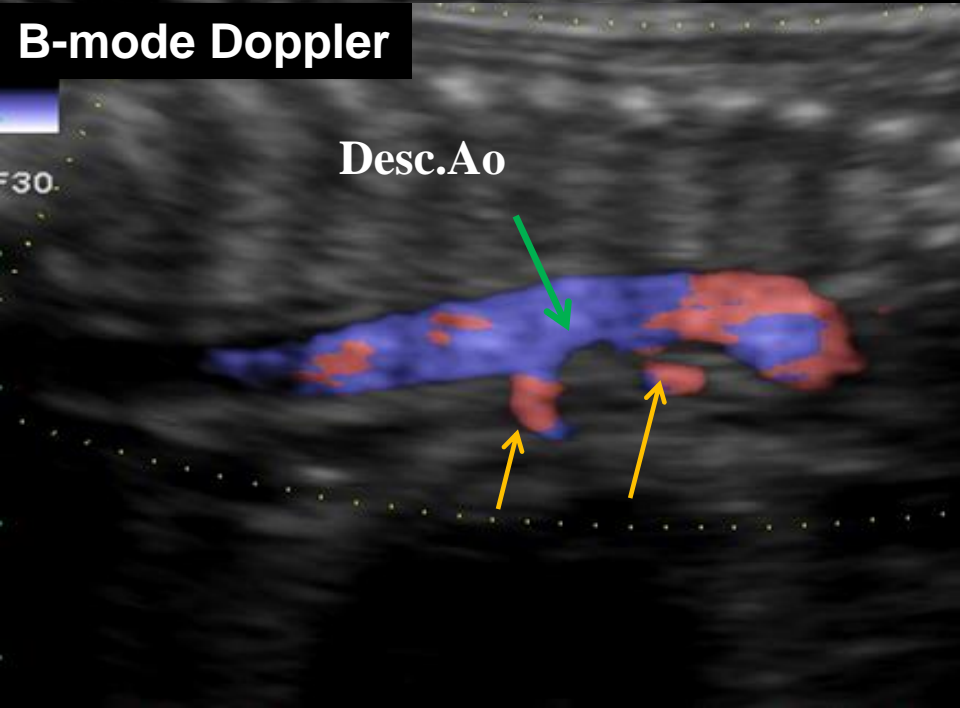
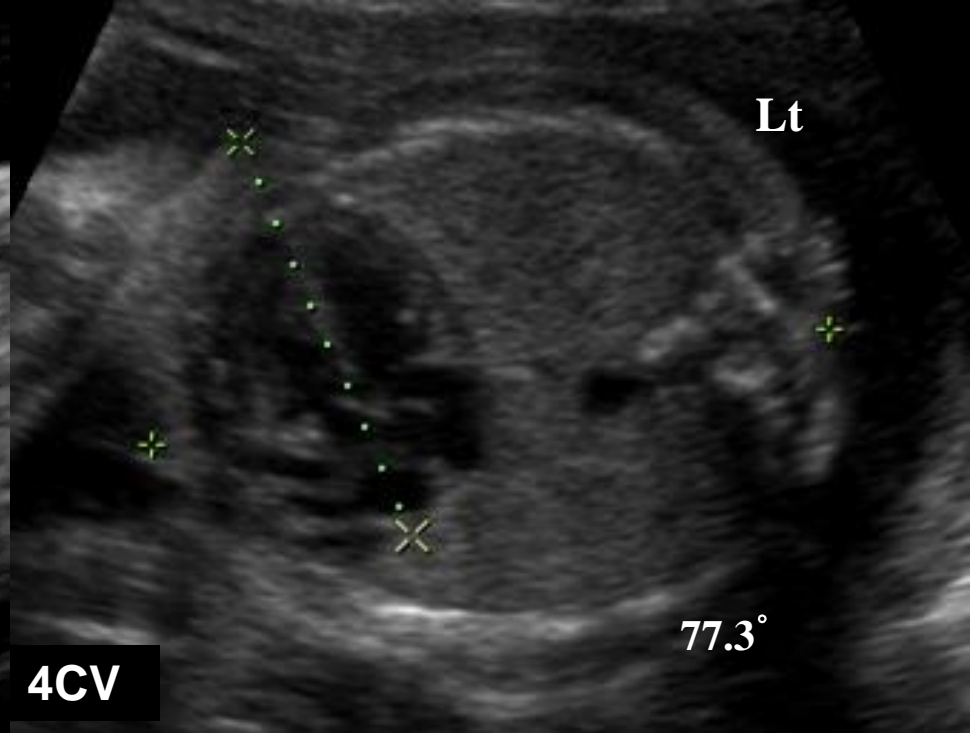
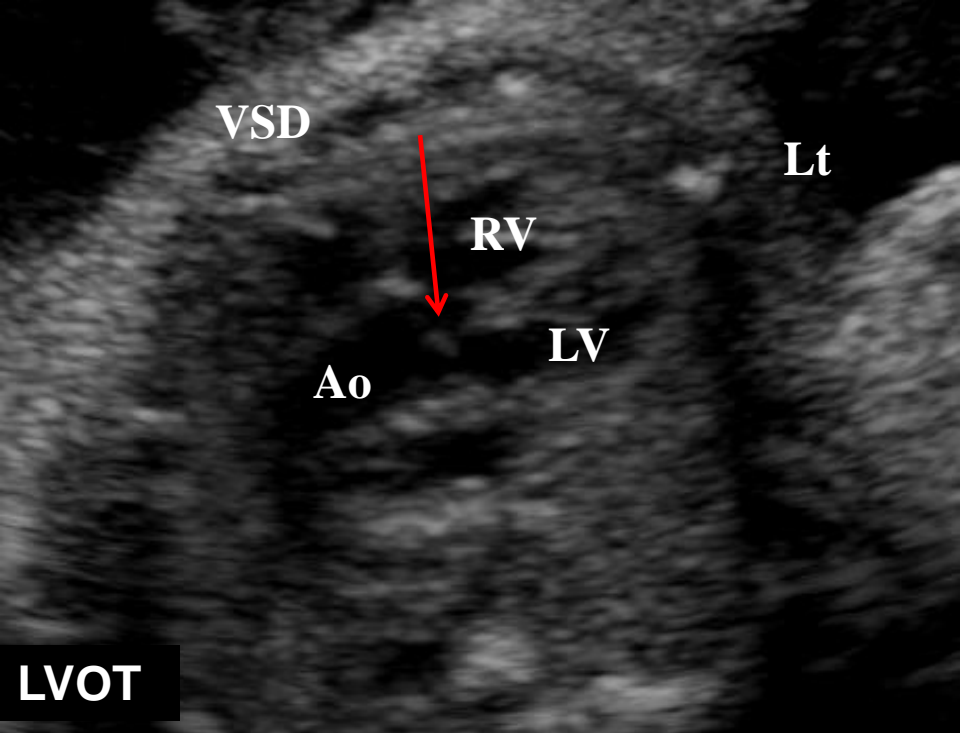
2009 December

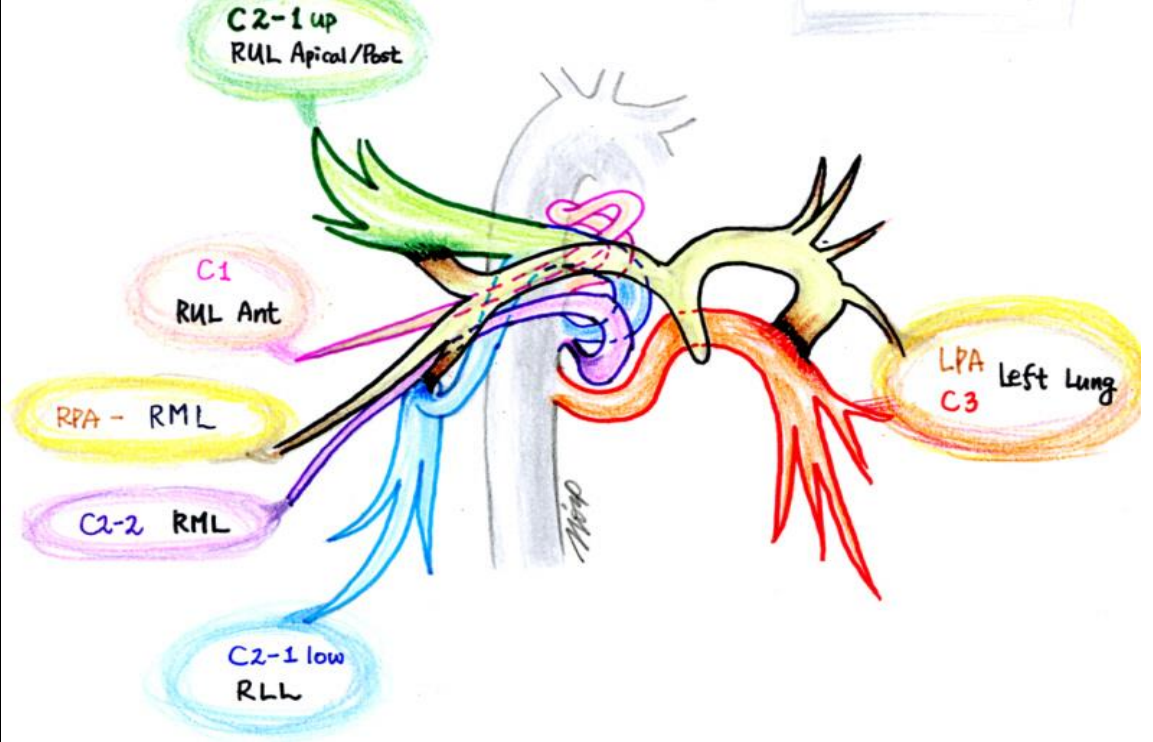
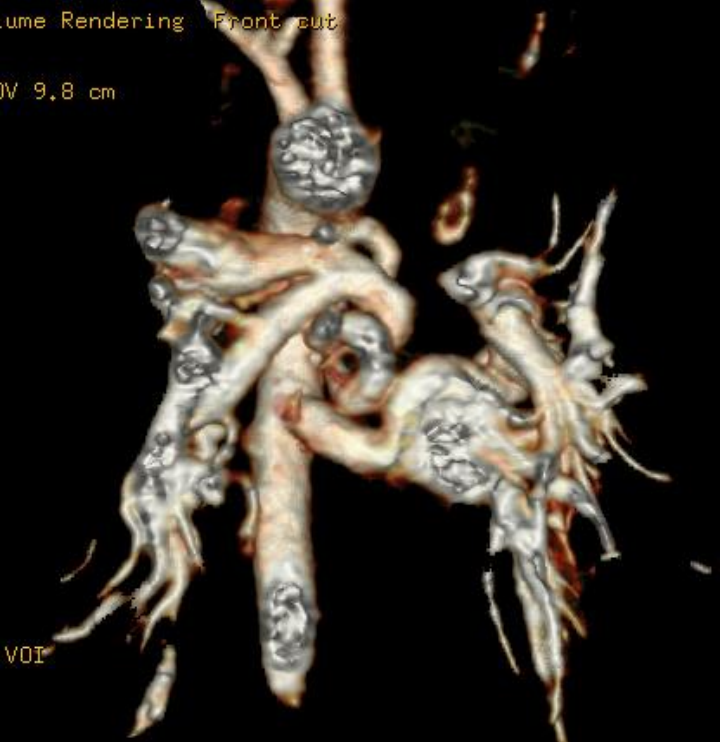
Acknowledgement:
Prof. Hye-Sung Won M.D
Department of Obstetrics and Gynecology
University of Ulsan College of Medicine,
Asan Medical Center, Seoul, Korea

Sponsored by Medison company

Case

- A prenatal detailed ultrasound examination was performed at 25 weeks' gestation.
- A heart CT was subsequently performed.
- At 38 weeks' gestation, a baby boy of 2780g with AS 7 at 1 minute and 8 at 5 minutes was delivered vaginally. The baby was admitted to neonatal intensive care unit. Echocardiography, and cardiac surgery was subsequently performed.





Heart computed tomography. a. Three collateral vessels (C1-C3) from descending thoracic aorta. b. schematic picture of collateral vessels.

Questions

- 1. What are the sonographic abnormalities?
- 2. What is the likely diagnosis?
- 3. What are the three collateral vessels as shown on CT?